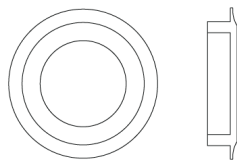




## N° 6946

The N° 6946 round, recessed finger-pull reflects the simple Georgian form that became popular at the turn of the 18th century. The clean lines and subtle cavetto molding make this simple pull appropriate for a variety of styles and interiors. The dimensions make it suitable for pocket doors and swing doors, where the visible hardware is to be kept to a minimum, or for window and cabinetry hardware. The pull is also available as a thumbturn and a keyhole escutcheon. All Nanz plated and patinated finishes are available.



Diameter: 2-3/4"  
Projection: 1/8"  
Depth: 1/2"  
Collection: Modern