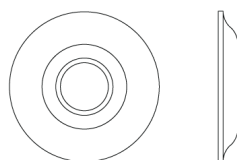




N° 5007

The N° 5007 rose is formed by a simple, elegant ogee that rises in a curve from the circumference to the shank of the handle. This rose, as designed, can accompany a vast selection of knobs and some levers, but can be manufactured for use with any handle if required. All NANZ plated and patinated finishes are available.



Diameter: 2" 2-1/2"

NEW YORK BOSTON CHICAGO MIAMI LOS ANGELES SAN FRANCISCO LONDON

NANZ & COMPANY 121 VARICK STREET NEW YORK NY 10013 212 367 7000 NANZ.COM