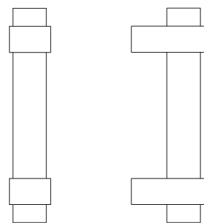




N° 6810A

The modern No 6810A pull is inspired by Bauhaus elements. It's bold, cylindrical acrylic rod is clasped by two subtly flaring rectilinear posts. The pull can range up to 60" for full-sized shower and refrigerator doors, and can be used in back-to-back configurations. A smaller version, the No 8810, is available in lengths suitable for cabinetry. All NANZ plated and patinated finishes are available.



Center-to-Center: 8" 10" 12" 18"

Diameter: 1" 1-1/4" 1-1/2" 1-3/4"

Projection: 2-1/4" 2-3/4" 3-1/4" 3-3/4"

Collection: Avant Garde