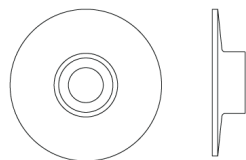




N° 5993CF

The No 5993CF represents a functionalist aesthetic with its three concealed fasteners. The subtle incline of the planar surface of the rose abruptly terminates with a 1/8" vertical rise meeting the shank. All NANZ plated and patinated finishes are available.



Diameter: 2" 2-1/4" 2-1/2" 2-5/8"

NEW YORK BOSTON CHICAGO MIAMI LOS ANGELES SAN FRANCISCO LONDON

NANZ & COMPANY 121 VARICK STREET NEW YORK NY 10013 212 367 7000 NANZ.COM