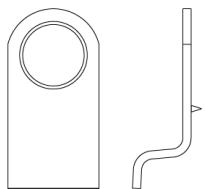


NANZ



N° 4936

The N° 4936 cylinder collar allows a door to be pulled shut by using the lip at the bottom of the plate. The escutcheon, shown with the NANZ mortise cylinder, supplants the need for a handle when a minimum of visible hardware is desired. All NANZ plated and patinated finishes are available.



Height: 3-1/2"

Width: 1-3/4"

Projection: 1-1/8"

NEW YORK BOSTON CHICAGO MIAMI LOS ANGELES SAN FRANCISCO LONDON

NANZ & COMPANY 121 VARICK STREET NEW YORK NY 10013 212 367 7000 NANZ.COM