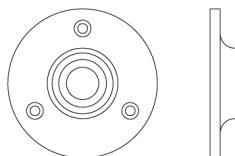




Nº 5879

A flat face rising into the shank forms the No 5879 rose. This design is best paired with our Neoclassical and Georgian handles, but can be manufactured for use with any handle if required. All NANZ plated and patinated finishes are available.



Diameter: 2" 2-3/4"

NEW YORK BOSTON CHICAGO MIAMI LOS ANGELES SAN FRANCISCO LONDON

NANZ & COMPANY 121 VARICK STREET NEW YORK NY 10013 212 367 7000 NANZ.COM