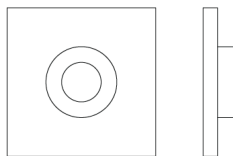




N° 5506CF

The unadorned, geometrical form of No 5506CF Bauhaus rose is reminiscent of functionalist design. In contrast to its flat, square face, a cylindrical shank rises from its center. Although often seen paired with the No 2006, the rosette can accompany a vast selection of knobs and levers. With the application of different finishes, the minimalist aesthetic of the rose can adapt to a variety of décor. All NANZ plated and patinated finishes are available.



Height: 1-1/4" 1-3/4" 2" 2-1/8" 2-1/2"

Width: 1-1/4" 1-3/4" 2" 2-1/8" 2-1/2"

Collection: Bauhaus