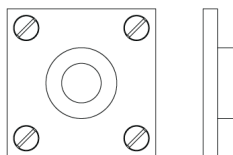




### N° 5506

The unadorned, geometrical form of N° 5506 Bauhaus rose with exposed fasteners is reminiscent of functionalist design. In contrast to its flat, square face, a cylindrical shank rises from its center. Although often seen paired with the N° 2006, the rosette can accompany a vast selection of knobs and levers. With the application of different finishes, the minimalist aesthetic of the rose can adapt to a variety of decors. All NANZ plated and patinated finishes are available. A selection of related products is also available.



Height: 2" 2-1/8"

Width: 2" 2-1/8"

Collection: Bauhaus

NEW YORK BOSTON CHICAGO MIAMI LOS ANGELES SAN FRANCISCO LONDON

NANZ & COMPANY 121 VARICK STREET NEW YORK NY 10013 212 367 7000 NANZ.COM