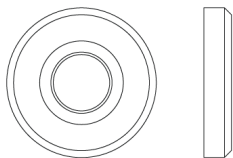




### N° 5381

The N° 5381 rosette features a cylindrical base that tapers to a smaller circle at the top. Although it is appropriate for modern decors, this rosette can complement a vast selection of knobs and some levers. It can be manufactured to be used with any handle if required. All NANZ plated and patinated finishes are available.



Diameter: 1-3/4"

Projection: 5/16"

NEW YORK BOSTON CHICAGO MIAMI LOS ANGELES SAN FRANCISCO LONDON

NANZ & COMPANY 121 VARICK STREET NEW YORK NY 10013 212 367 7000 NANZ.COM