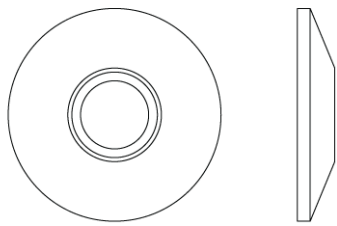


N° 5175

A cylindrical ring at the base encircles the steep conical form of the N° 5175 modern rose. This design is best paired with our contemporary handles, but can be manufactured for use with any handle if required. All Nanz plated and patinated finishes are available.



Diameter: 2"

NEW YORK    BOSTON    CHICAGO    MIAMI    LOS ANGELES    SAN FRANCISCO    LONDON

THE NANZ COMPANY    121 VARICK STREET NEW YORK NY 10013    212 367 7000    NANZ.COM

© 1989-2019 ALL RIGHTS RESERVED