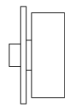
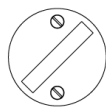




N° 4070

The N° 4070 rectilinear thumbturn can be used with all Nanz full mortise locksets. The minimalist form of the turnpiece is complemented by a disc shaped backplate with exposed fasteners. All Nanz plated and patinated finishes are available.



Diameter: 1-5/8"

Projection: 3/4"

Height x Width: 1-3/8" x 1/4"

Collection: Minimal