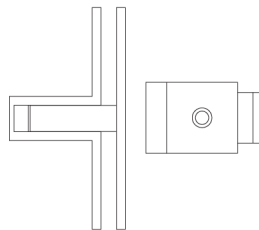


NANZ



N° 3031S

The No 3031S Harmon hinge allows a door to swing clear of the opening and fold back into a pocket at a right angle to the closed position. The No 3022S Harmon has an integral two point stop. No part of the hinge projects beyond the face of the door in either the open or closed position. The architectural effect allows for the creation of a paneled hallway when the doors are in the open position. While available in the provided dimensions, it can be customized to any specification. All NANZ plated and patinated finishes are available.



Door Thickness: 1-3/4" 2-1/4"

NEW YORK BOSTON CHICAGO MIAMI LOS ANGELES SAN FRANCISCO LONDON

NANZ & COMPANY 121 VARICK STREET NEW YORK NY 10013 212 367 7000 NANZ.COM