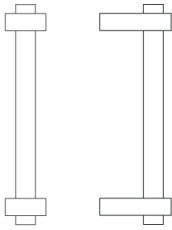




EC-8810

The EC-8810 handle can be mounted horizontally as a drawer pull or vertically as a cabinet pull. A simple bar between two slightly flaring posts forms the handle. 4" centers. See all available finishes [here](#).



Center-to-Center: 4"

NEW YORK    BOSTON    CHICAGO    MIAMI    LOS ANGELES    SAN FRANCISCO    LONDON

THE NANZ COMPANY    121 VARICK STREET NEW YORK NY 10013    212 367 7000    NANZ.COM

© 1989-2017 ALL RIGHTS RESERVED