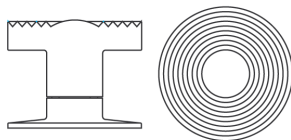


## Nº 1317

The No 1317 knob uses geometric forms to create a simple appearance. A series of concentric grooves on the face lend the knob a complex overall aesthetic. The rose, with slightly pitched face and three exposed screws, rises to meet the cylindrical shank of the knob. Full mortise entry locks, privacy locks, passage latches, as well as tubular latches can be provided for use with this knob. All Nanz plated and patinated finishes are available. It has a diameter of 2-1/4" and a projection of 1-7/8".



Diameter: 2-1/4"

Projection: 1-7/8"

NEW YORK BOSTON CHICAGO MIAMI LOS ANGELES SAN FRANCISCO LONDON

THE NANZ COMPANY 121 VARICK STREET NEW YORK NY 10013 212 367 7000 NANZ.COM